



a module solution provider

MT5C01-02R1

Motion Presence Detection

Evaluation Kit

User Guide

Revision 1.0

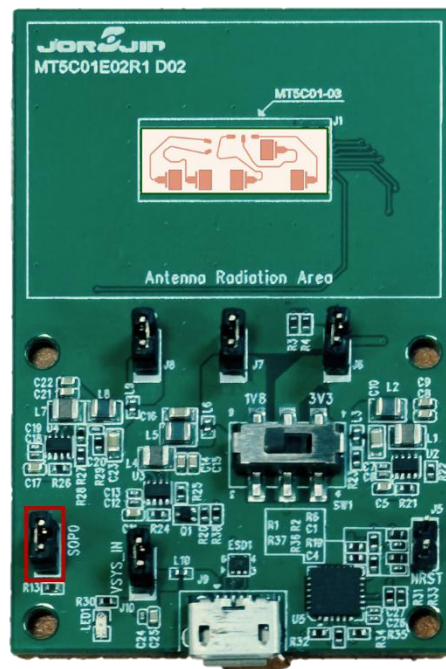
MT5C01-02R1 Operating with TI Visualizer

● Driver and Tools download:

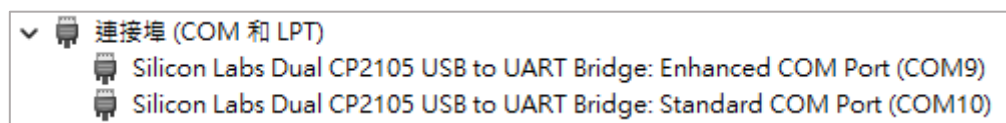
1. USB driver: [CP210x Universal Windows Driver.zip](#)
2. FW programmer: [Uniflash](#)
3. Toolbox: [Industrial Visualizer.rar](#)
4. FW & Configuration file: [MT5C01-02R1 FW&cfg](#)

● Flashing Firmware:

1. Confirm that jumper pins J4 (SOP0) on the MT5C01-02R1 are in short state.

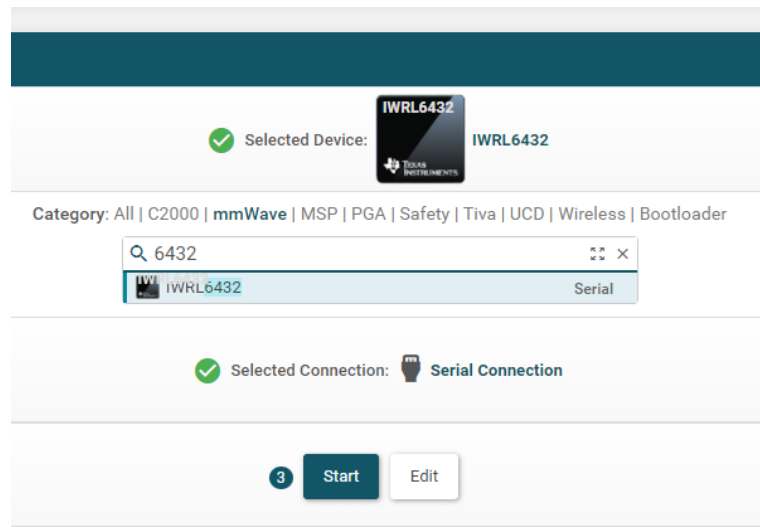


2. Extract the [CP210x Universal Windows Driver.zip](#), then right-click on the silabser.inf file in the CP210x_Universal_Windows_Driver folder and select the "Install" option to install the Silicon Labs CP210x driver.
3. Connect the MT5C01-02R1 to the computer using a USB 2.0 Type-A to Micro-B cable and verify the COM Port recognition and connection in the Device Manager.

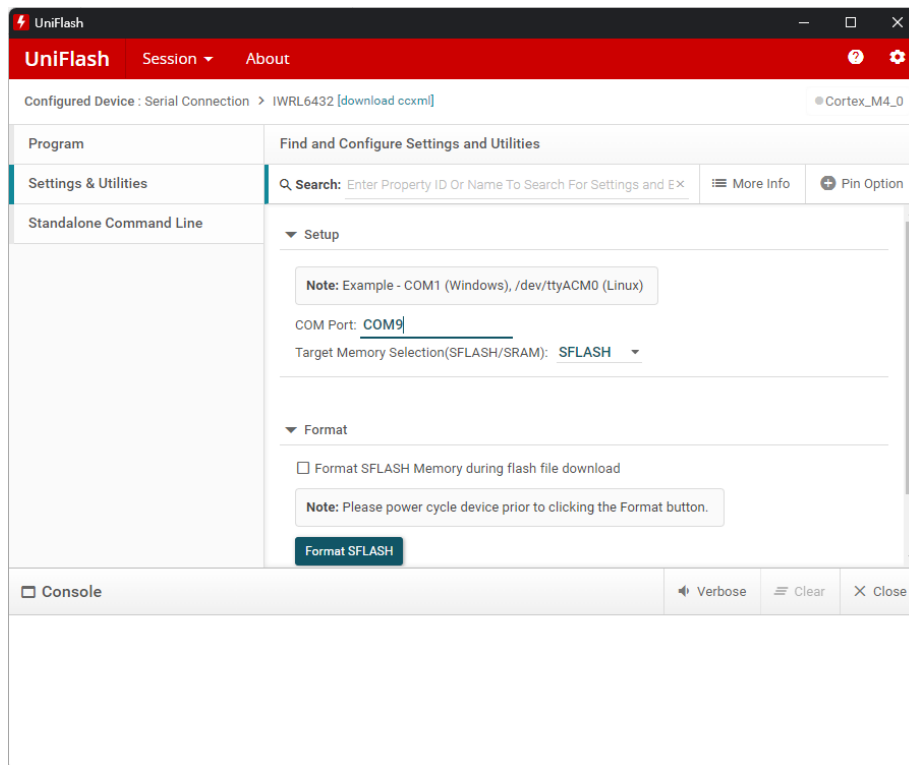


4. Open the [UniFlash](#) application (version 8.3 or above).

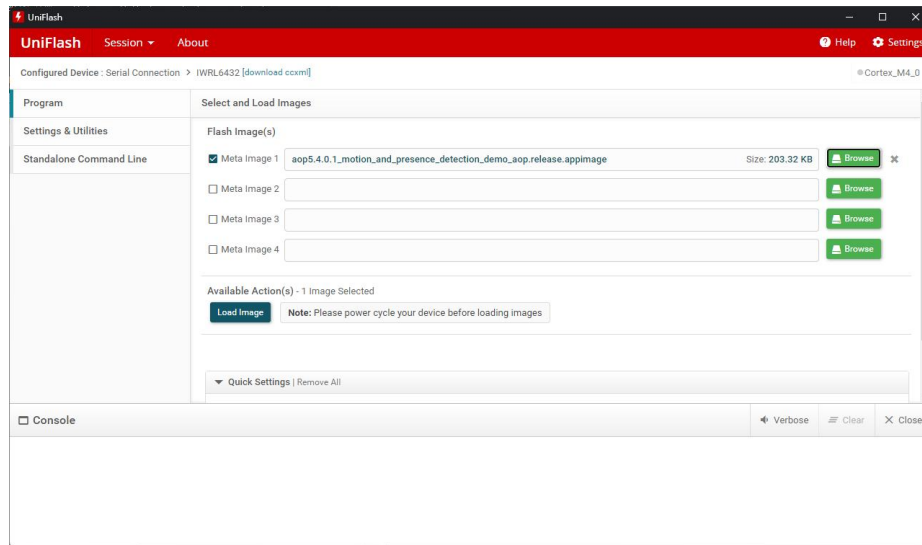
5. Select the configuration for mmWave IWRL6432.



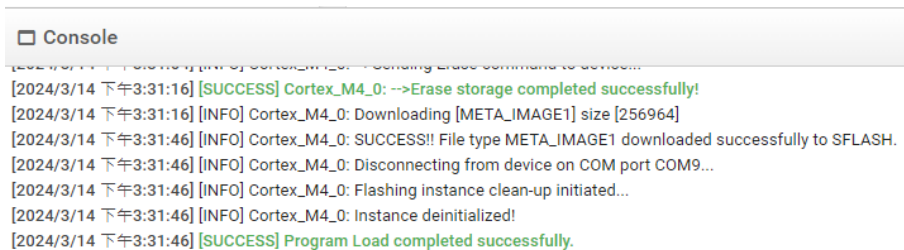
6. Enter the number of the Enhanced COM Port in the "Setting & Utilities" page.



- On the Program page, check Meta Image1 and browse for the firmware binary file to be written, making sure to display all files, and select **MT5C01-02R1 MotPre V1.0.0.appimage**.

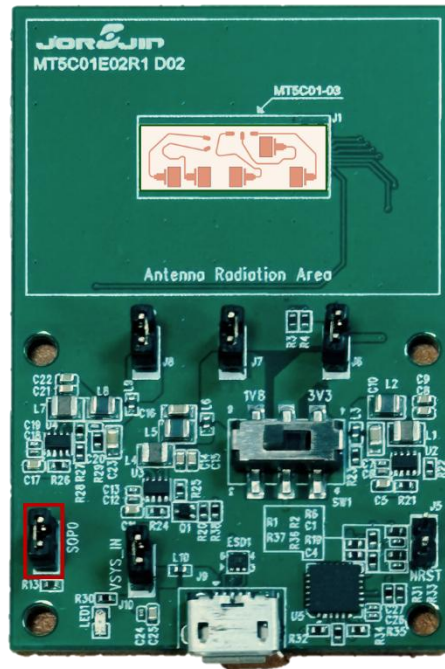


- Press Load Image to start the programming process. Wait until the success message appears to complete the firmware writing process.

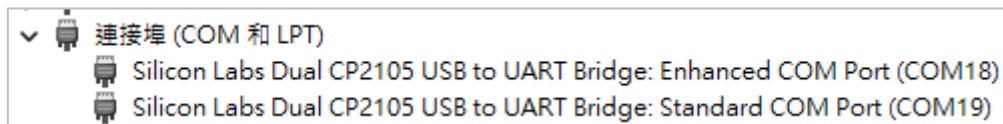


● Preparation Work:

1. Confirm that jumper pins J4 (SOP0) on the MT5C01-02R1 are in opening state.

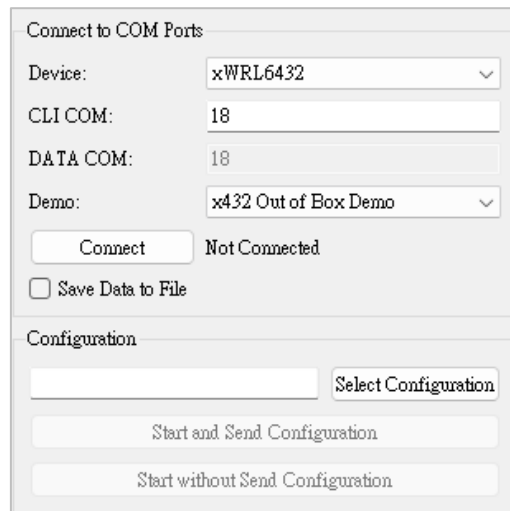


2. Connect the MT5C01-02R1 to the computer using a USB 2.0 Type-A to Micro-B cable and verify the COM Port recognition and connection in the Device Manager.

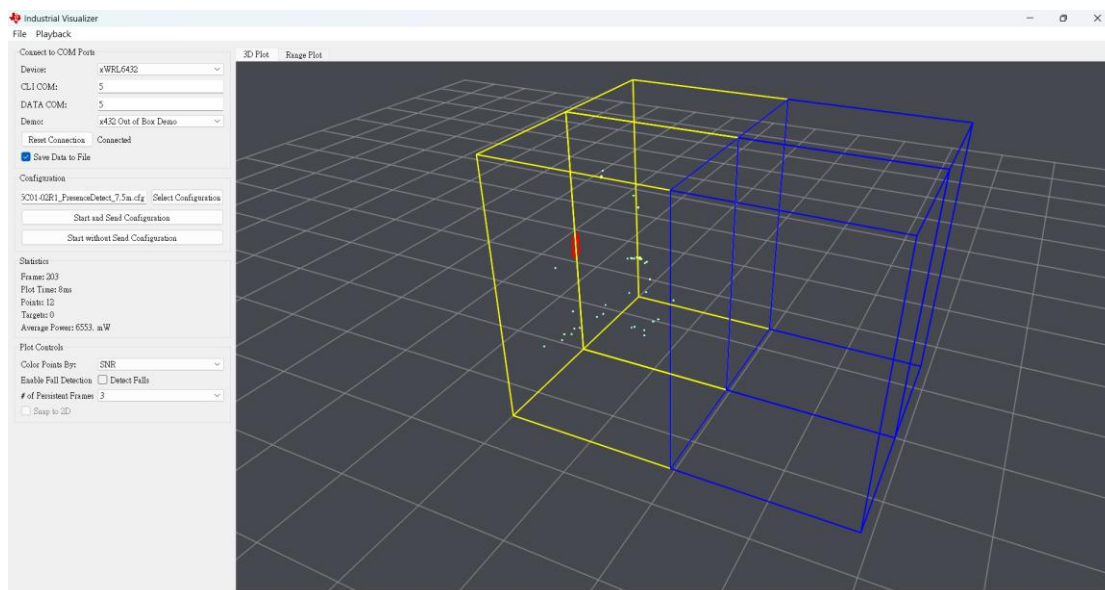


● **Using test tool to start the radar:**

1. Extract and open the **Industrial Visualizer.exe**.
2. Select the device “xWRL6432”, and the program will automatically search for the COM Port, or it can be manually entered. For the Demo option, please select “x432 Out of Box Demo”.



3. Press the “Connect” button to establish the connection.
4. Unclick “Save Data to File” option.
5. Press the "Select Configuration" button and choose the **MT5C01-02R1 PresenceDetect 7.5m.cfg**.
6. Press “Start and Send Configuration” to send the command and start the radar.



- **HISTORY CHANGE**

Revision	Date	Description
Revision 1.0	2025-03-20	First version.