


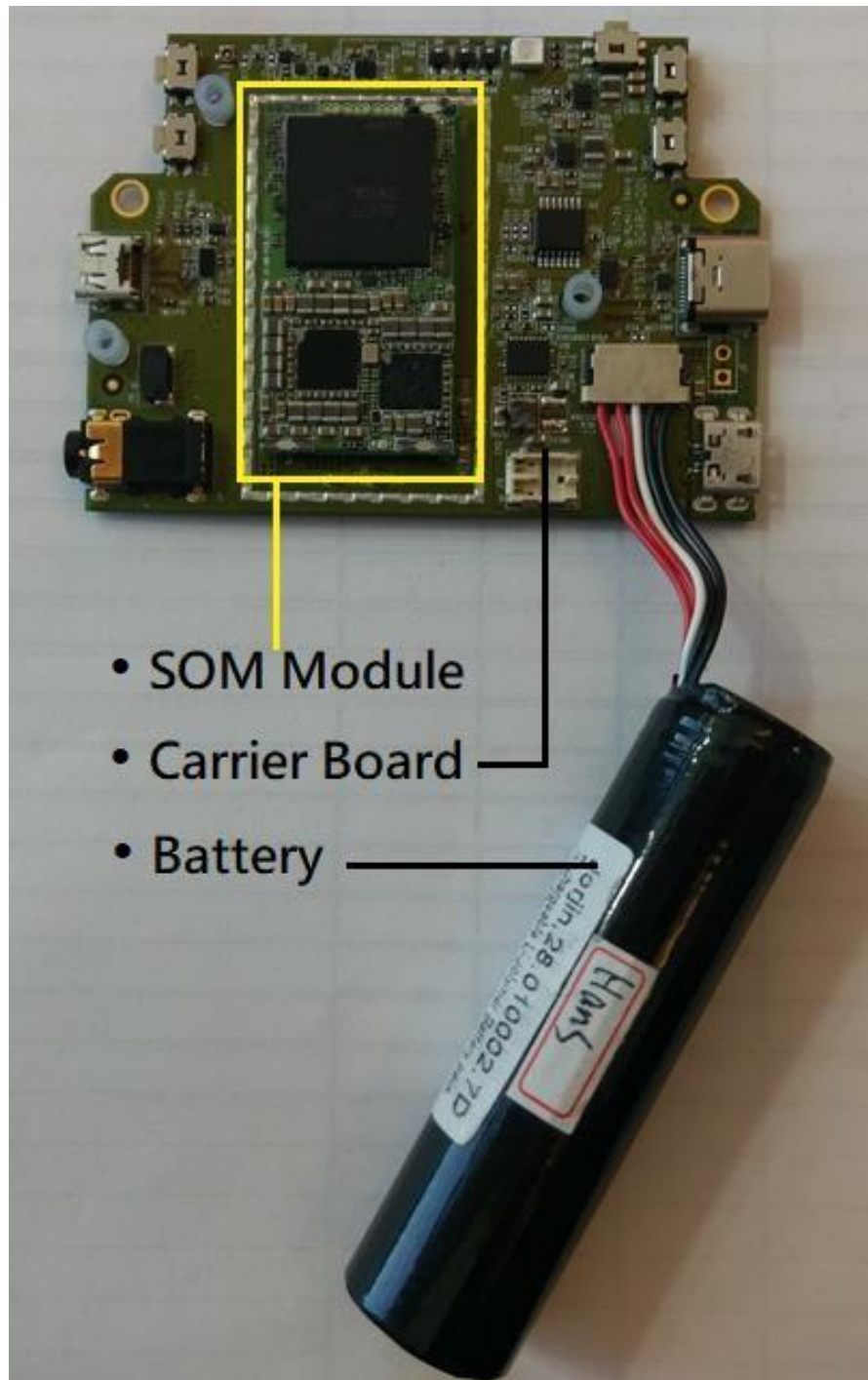
J-Reality Kit Quick Guide

Document Revision 0.3
2018/01/16



➤ The Kit-1 for Developer

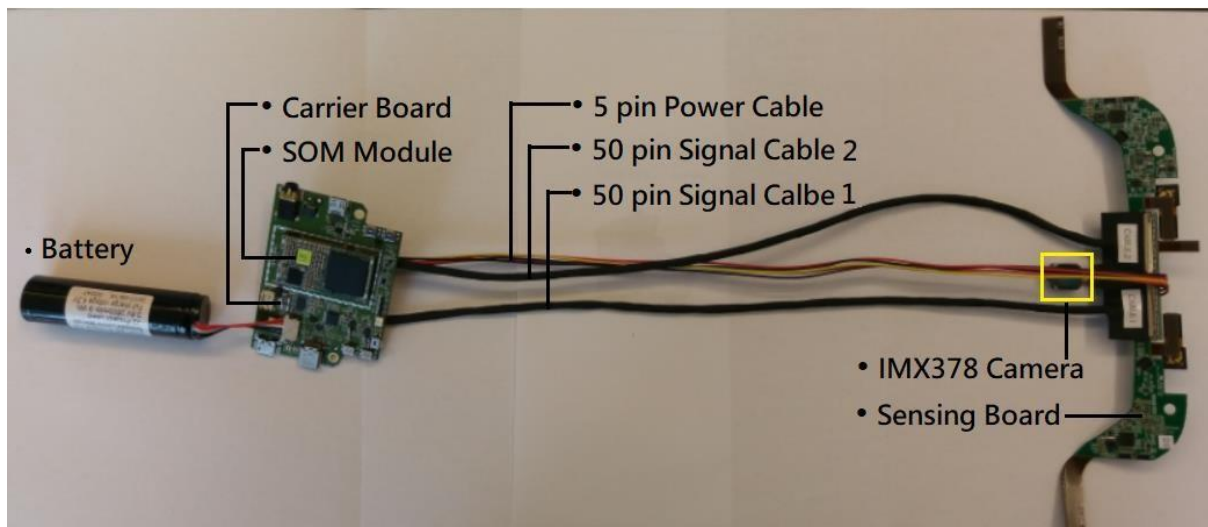
- SD820 SOM Module
- Carrier Board
- 18650 Battery



➤ The Kit-2 for Developer

It can be used for camera developing

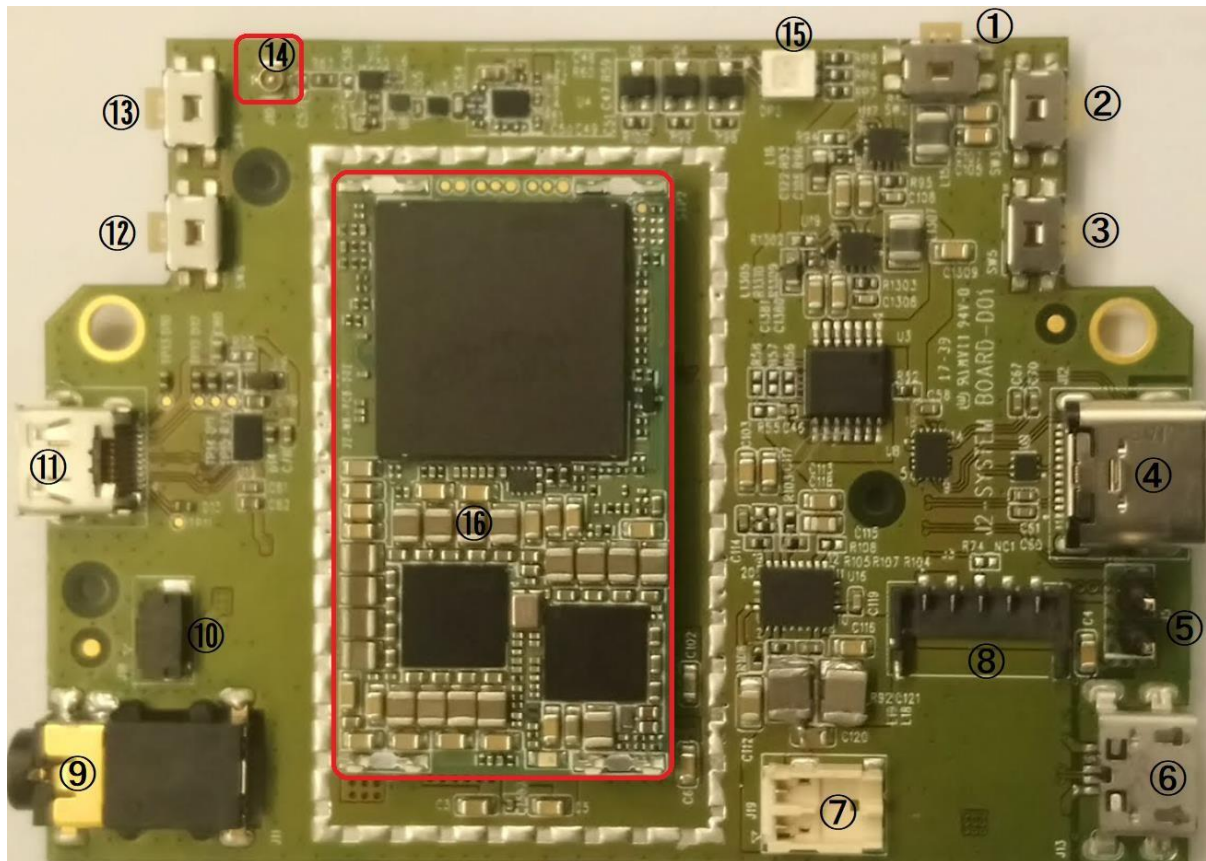
- SD820 SOM Module
- Carrier Board
- 18650 Battery
- Signal Cable x 2
- Power Cable x 1
- Sensing Board
- Camera Modules x 3: the main camera is IMX378



The Accessory

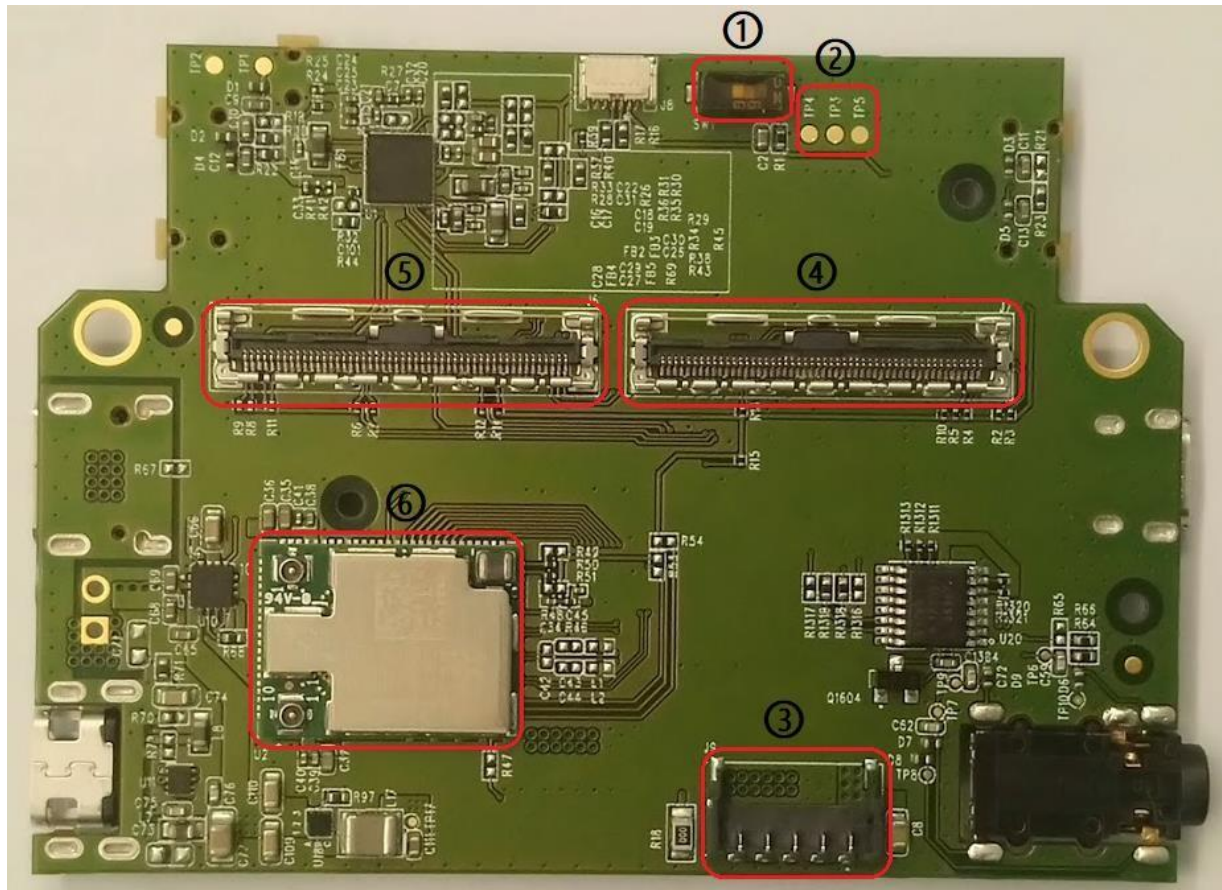
1. USB QC3.0 Adapter	2. Type C Cable
	<p>Connector 1: USB Type-C Male Connector 2: USB 2.0 Type A Male</p> 
3. Micro USB OTG Adapter	4. Mouse
<p>Connector 1: Micro USB B 5Pin Male Connector 2: USB 2.0 A Female</p> 	
5. Micro HDMI to HDMI cable	6. Monitor
	

Carrier Board- Top



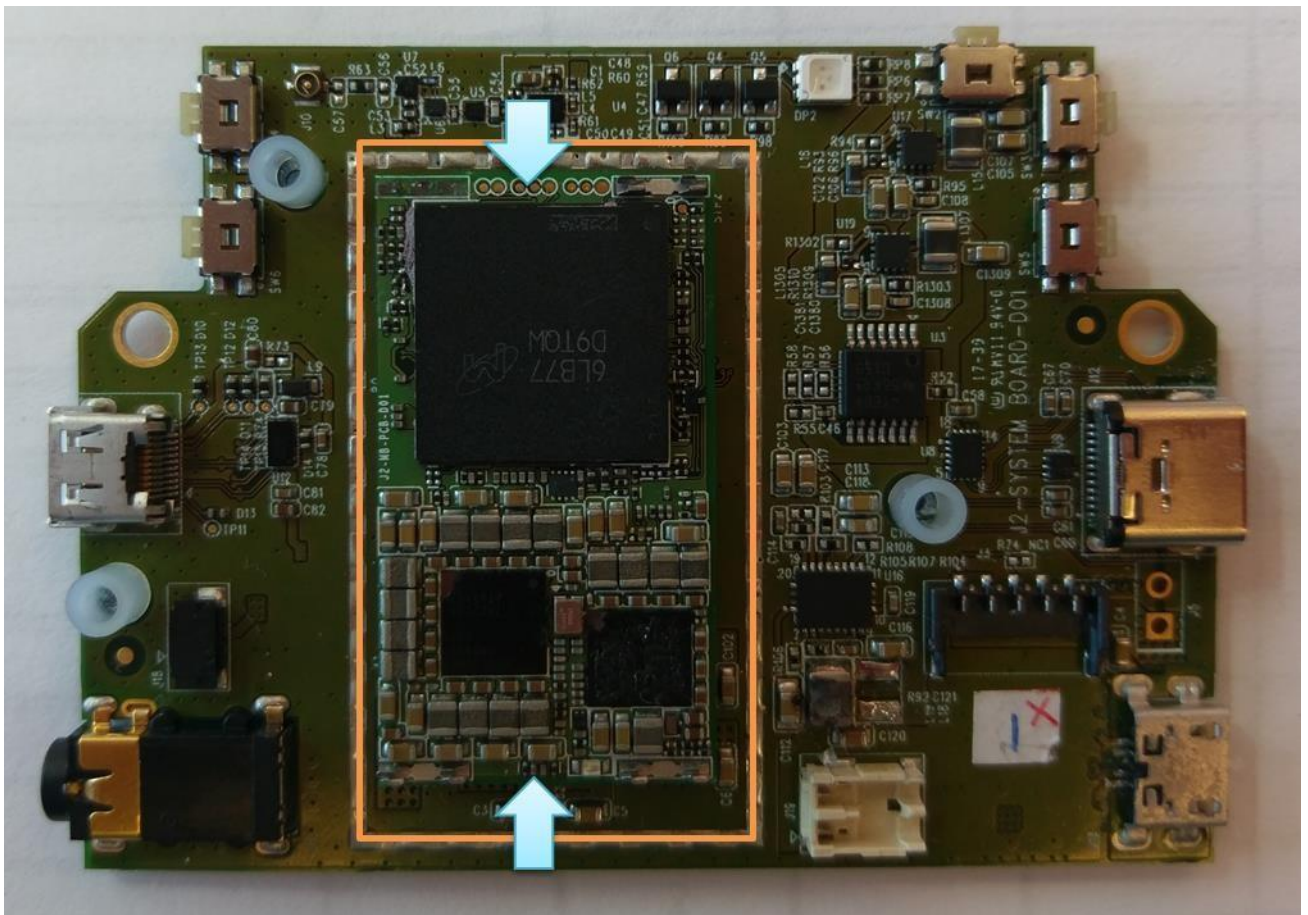
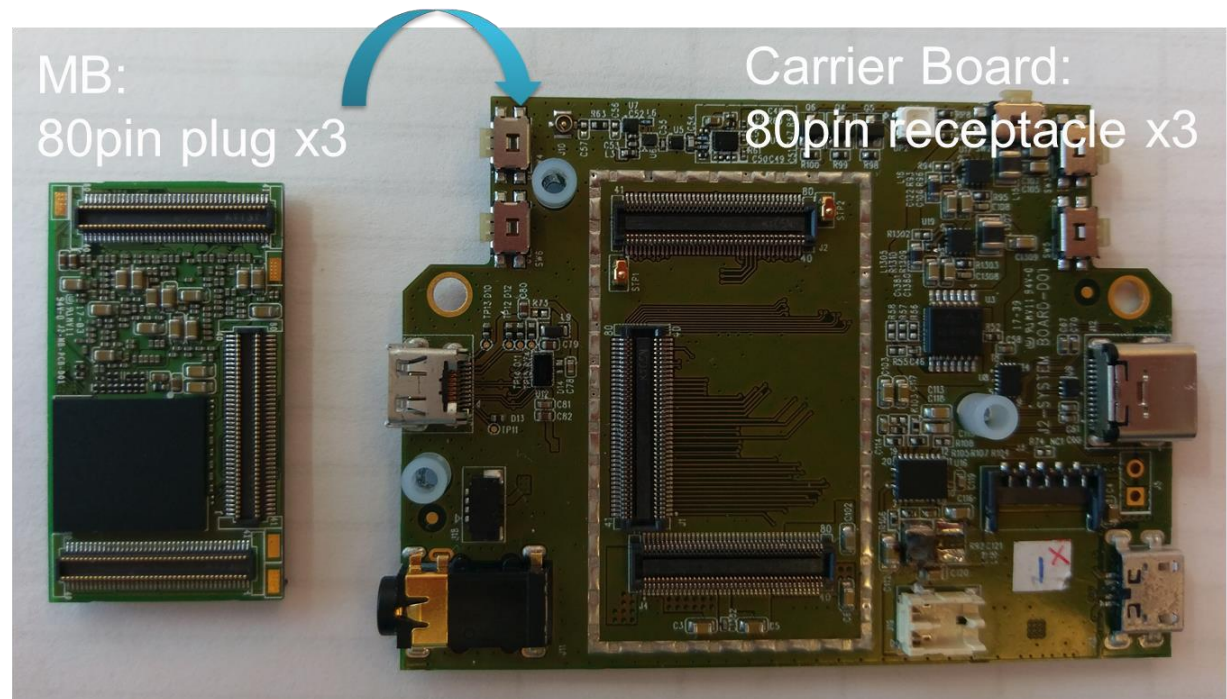
① Power Key	⑨ Audio Earphone Jack
② Brightness Up Key	⑩ Fan Connector
③ Brightness Down Key	⑪ Micro HDMI
④ USB Type C	⑫ Volume Down Key
⑤ VBAT+/- Connector Pin	⑬ Volume Up Key
⑥ Micro USB OTG	⑭ GPS Antenna Connector
⑦ 2nd Battery Pack Connector	⑮ RGB LED
⑧ Main Battery Pack Connector	⑯ SD820 Module

Carrier Board- Bottom

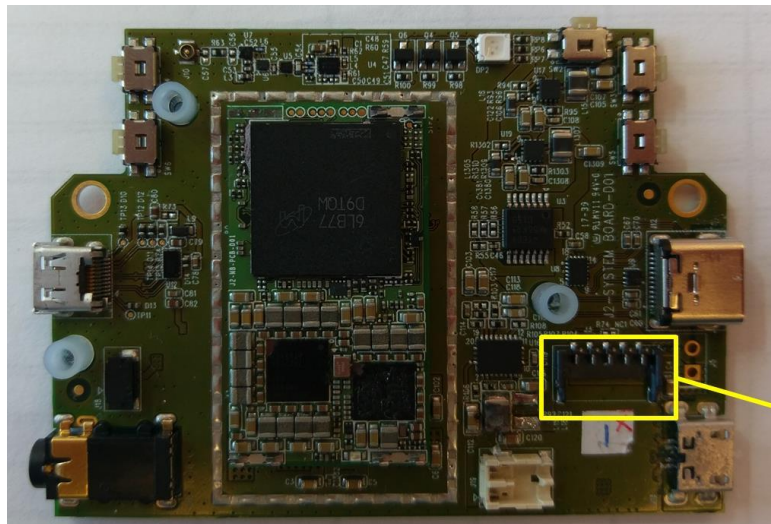


- | |
|---------------------------------------|
| ① QFIL Download Switch |
| ② UART Debug Port |
| ③ VPH_PWR to sensor board |
| ④ System Data Cable 2 to Sensor Board |
| ⑤ System Data Cable 1 to Sensor Board |
| ⑥ WLAN Module/QC6174 |

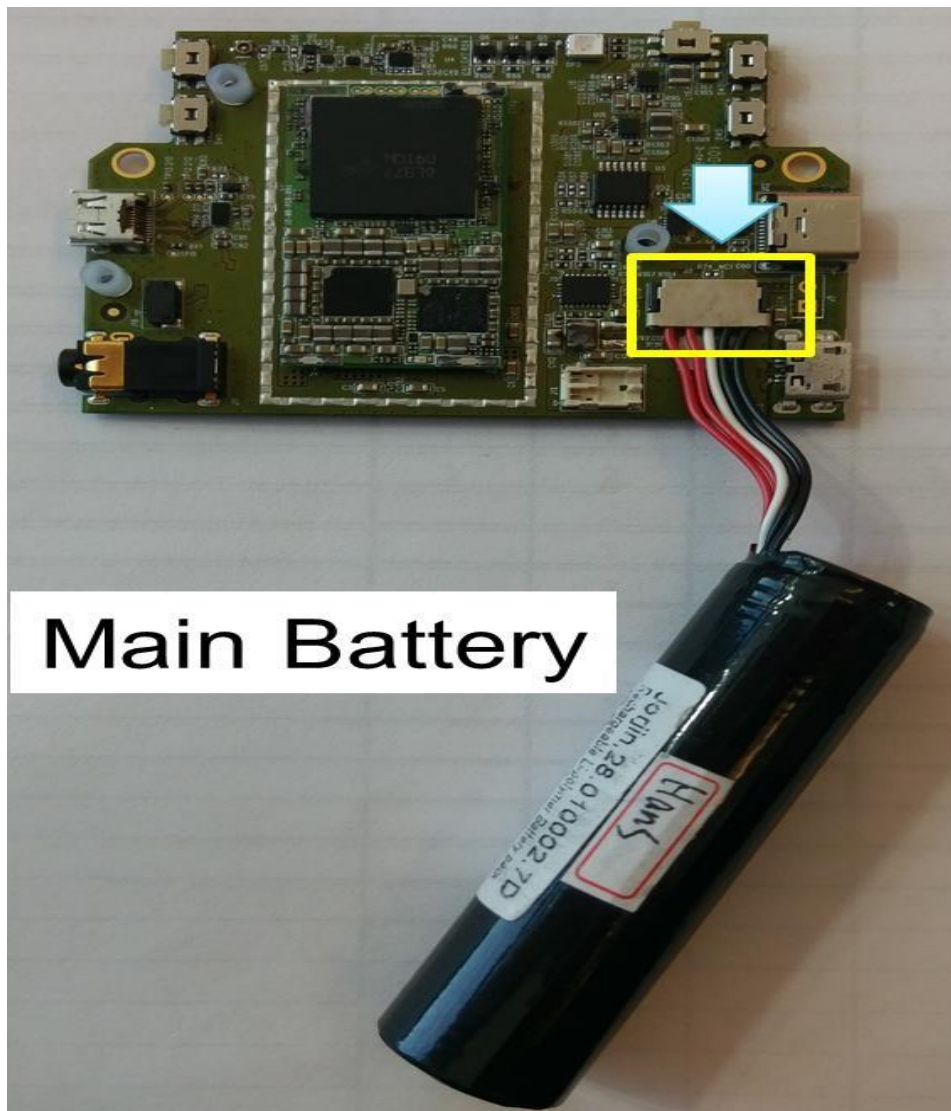
The Connection of PCBA -1



The Connection of PCBA -2

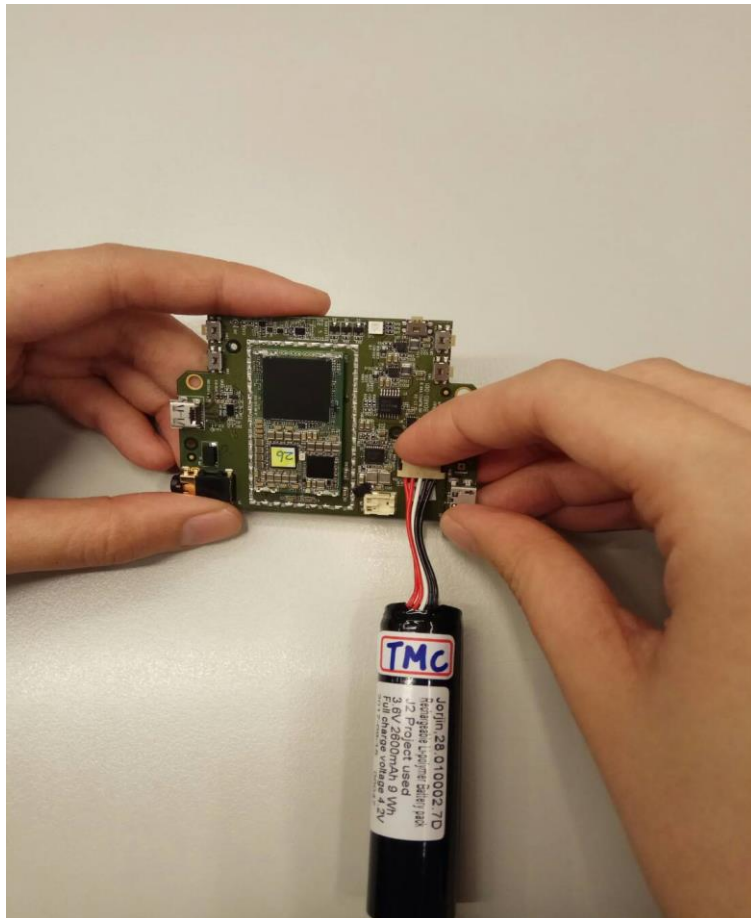


5pin
receptacle
to main BAT



Main Battery

The Connection of PCBA -2

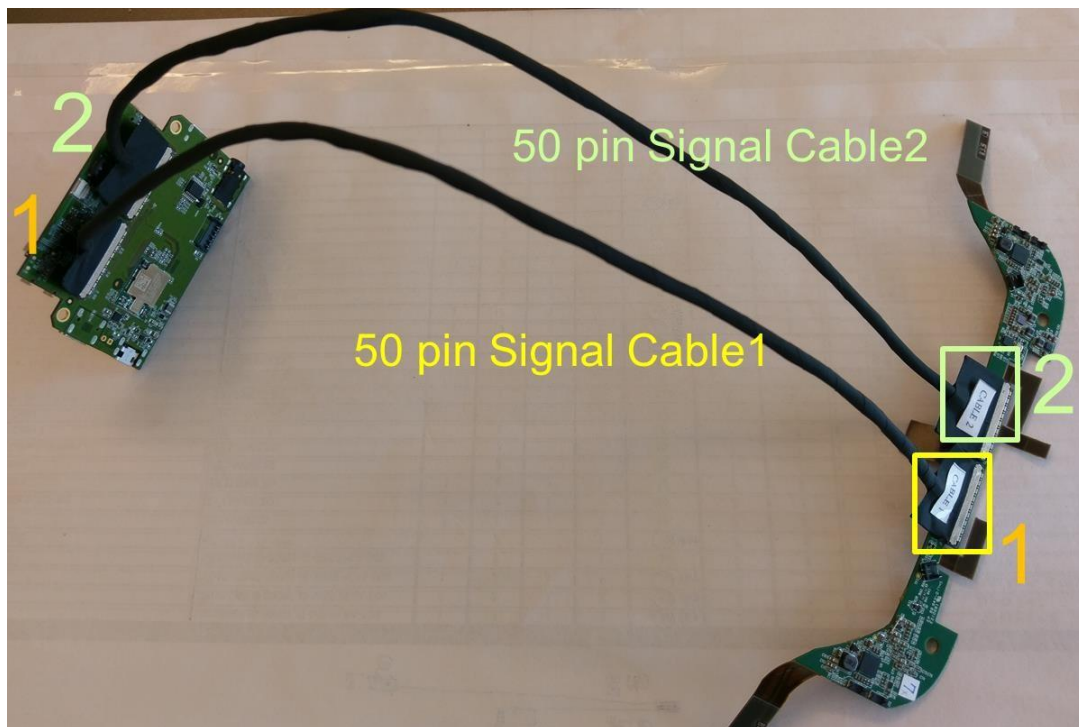


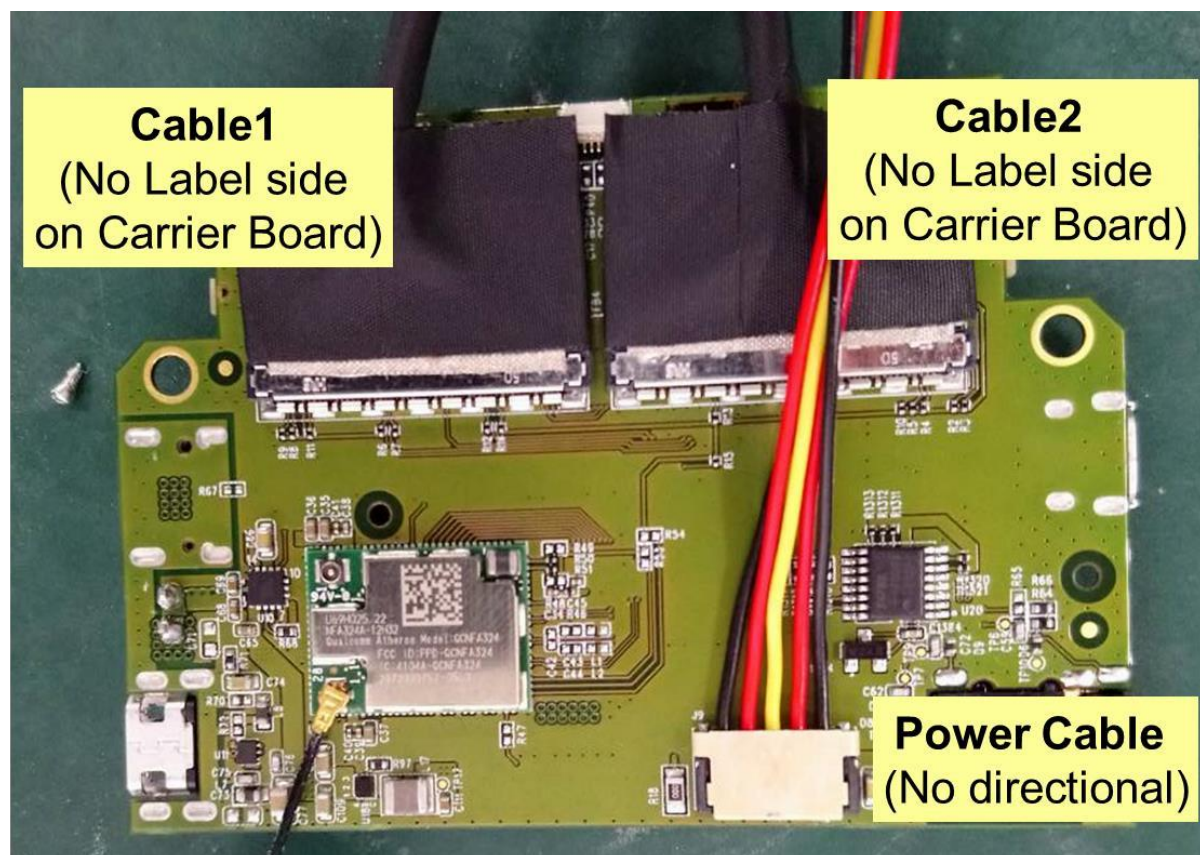
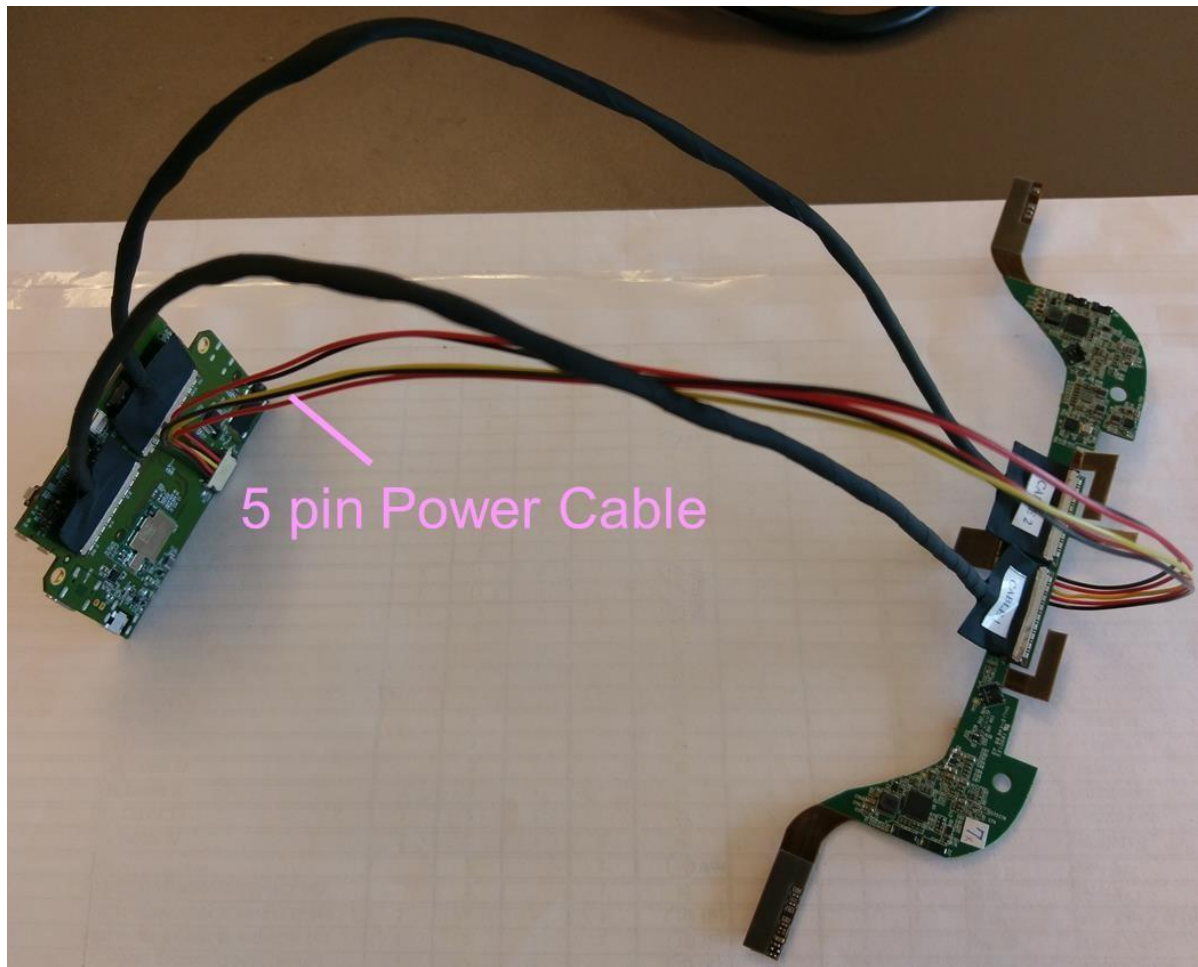
To Connect and disconnect the battery from top side of connector

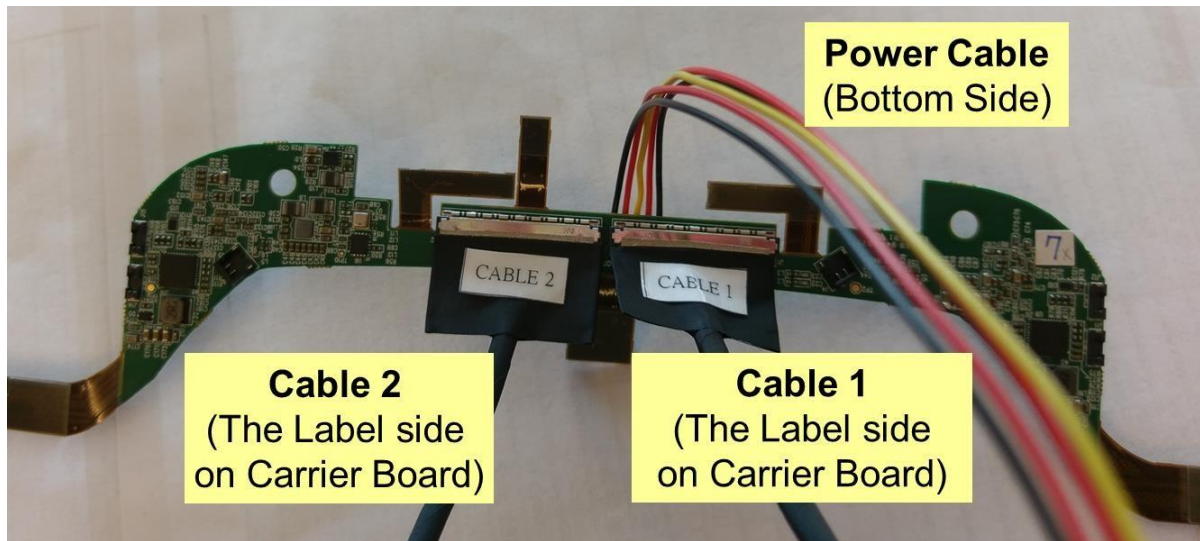
The Connection of PCBA -3

The connection of Signal Cable1 and Signal Cable2 are Fixed. Please follow the picture below to assembly and do not change.

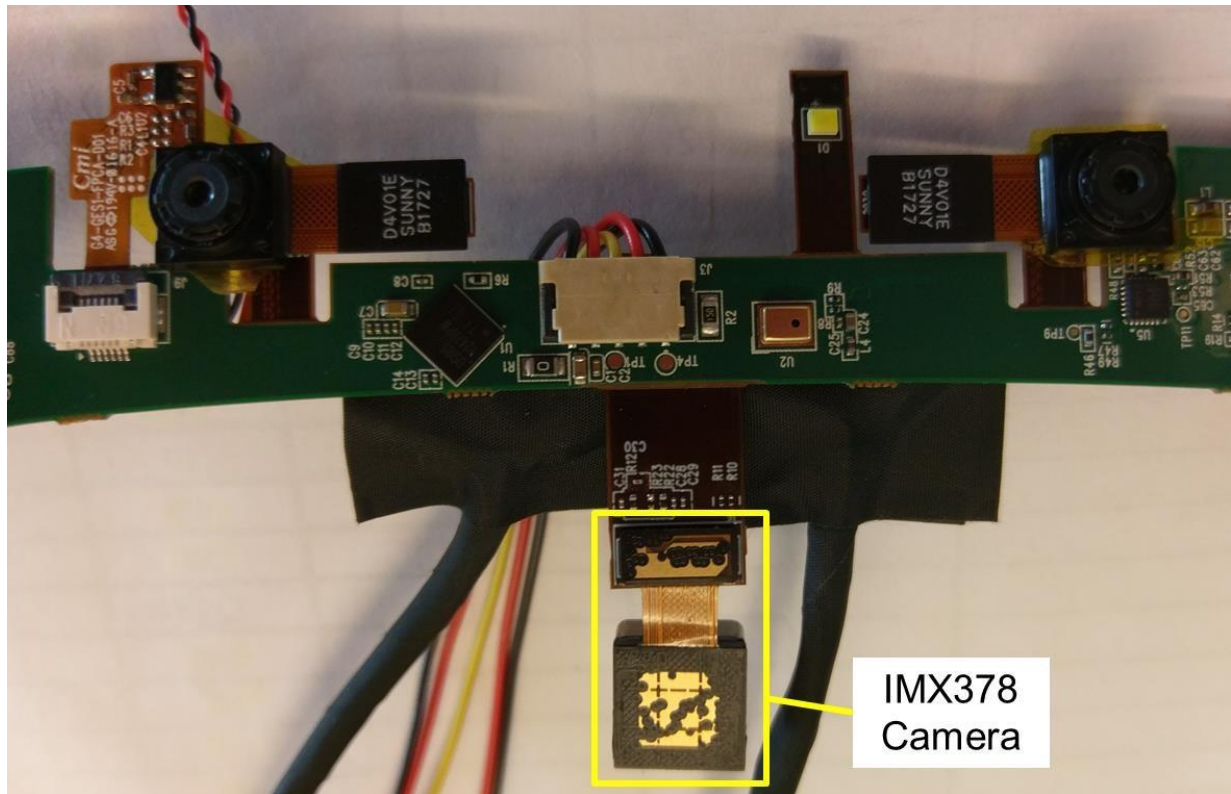
- (1) The label side (show Cable1 and Cable 2) are connected to sensing board
- (2) The place of Cable 1 and 2 cannot be exchanged





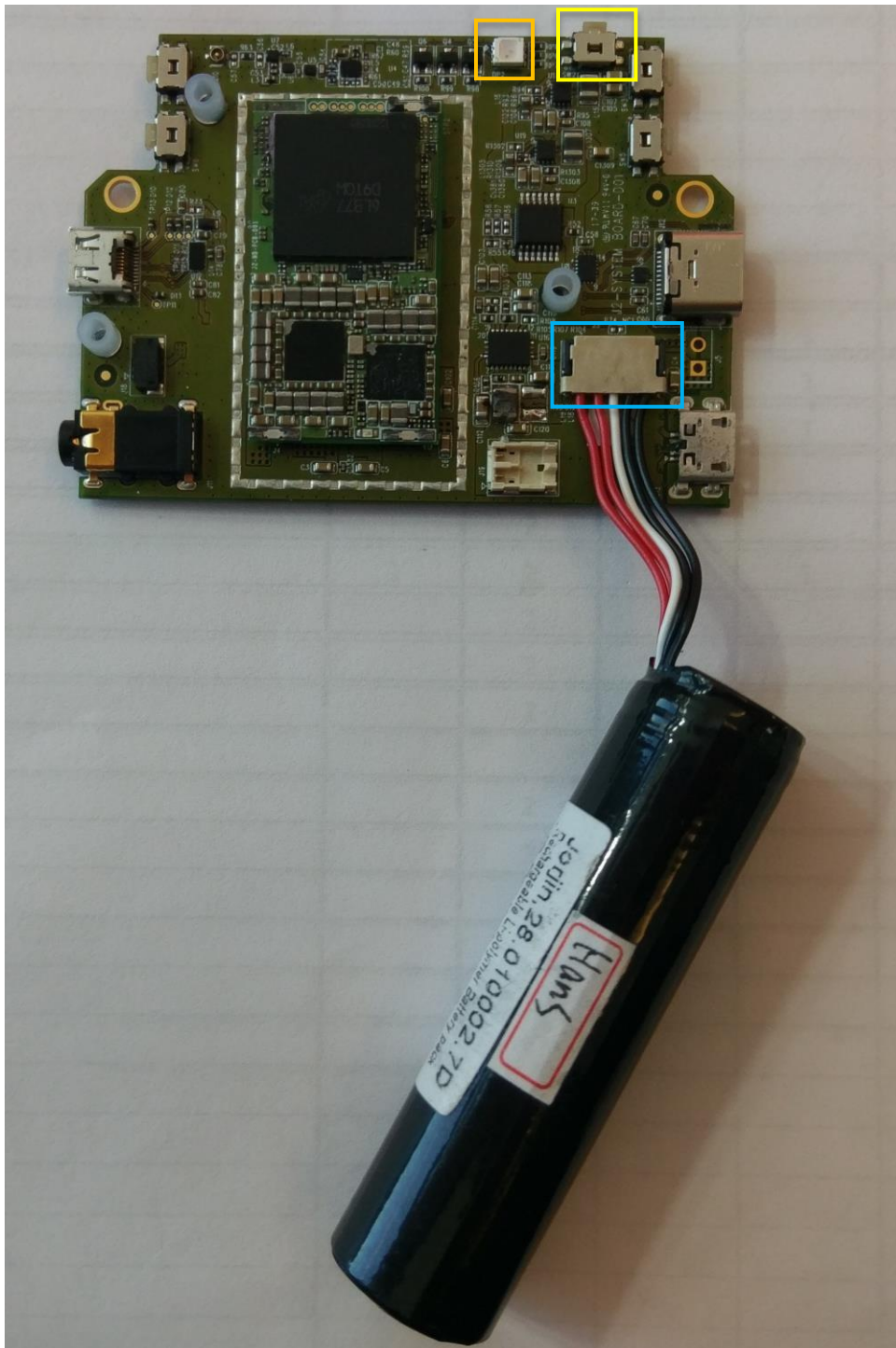


The Connection of PCBA -4



1. Power on

- (1) Connect the battery on the 5 pin connector
- (2) Press the power key for 3 seconds.
- (3) The LED indicator will light green after 20 seconds.



(4) If there is no green light after 20 seconds. It may be caused by the low capacity battery. Please measure the capacity by multi-meter or try to charge the battery.

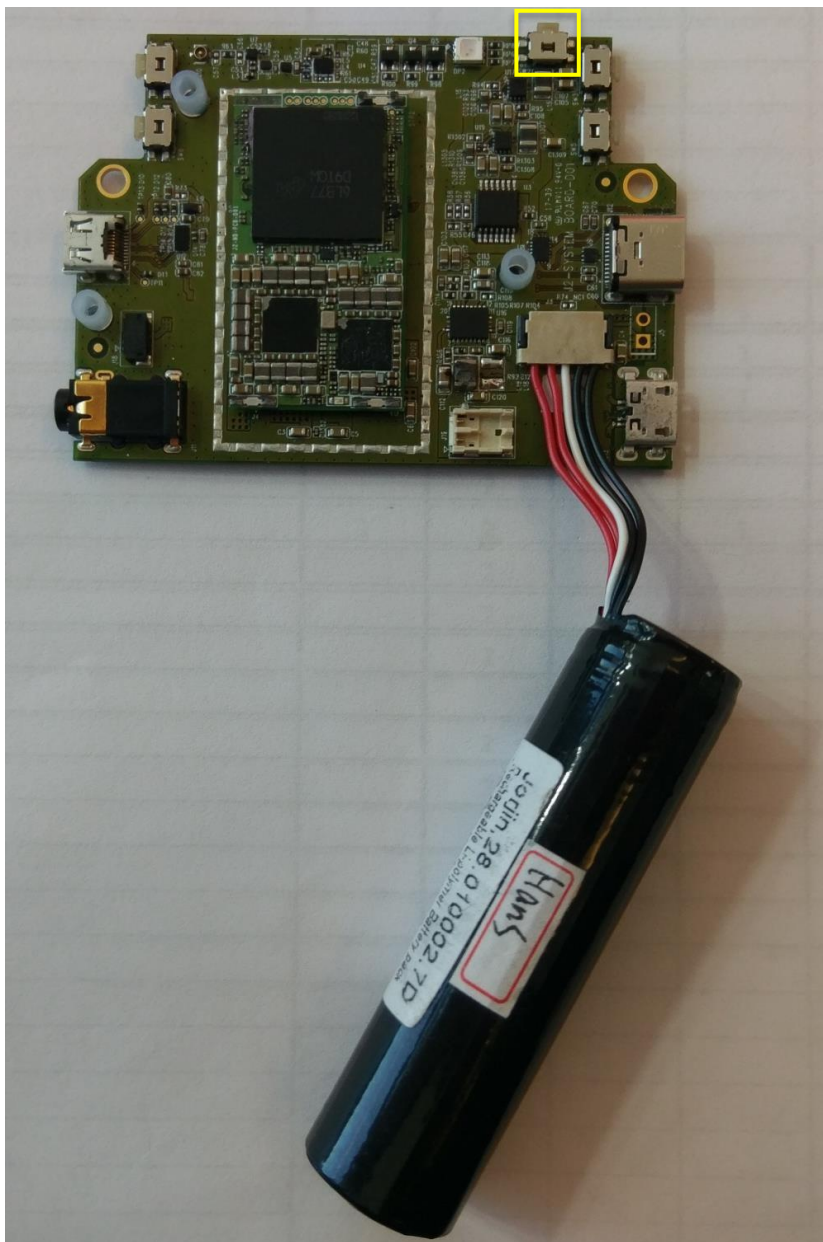


2. Power off

(1) Press the power key for 3 seconds.

(2) The system will automatically shut down

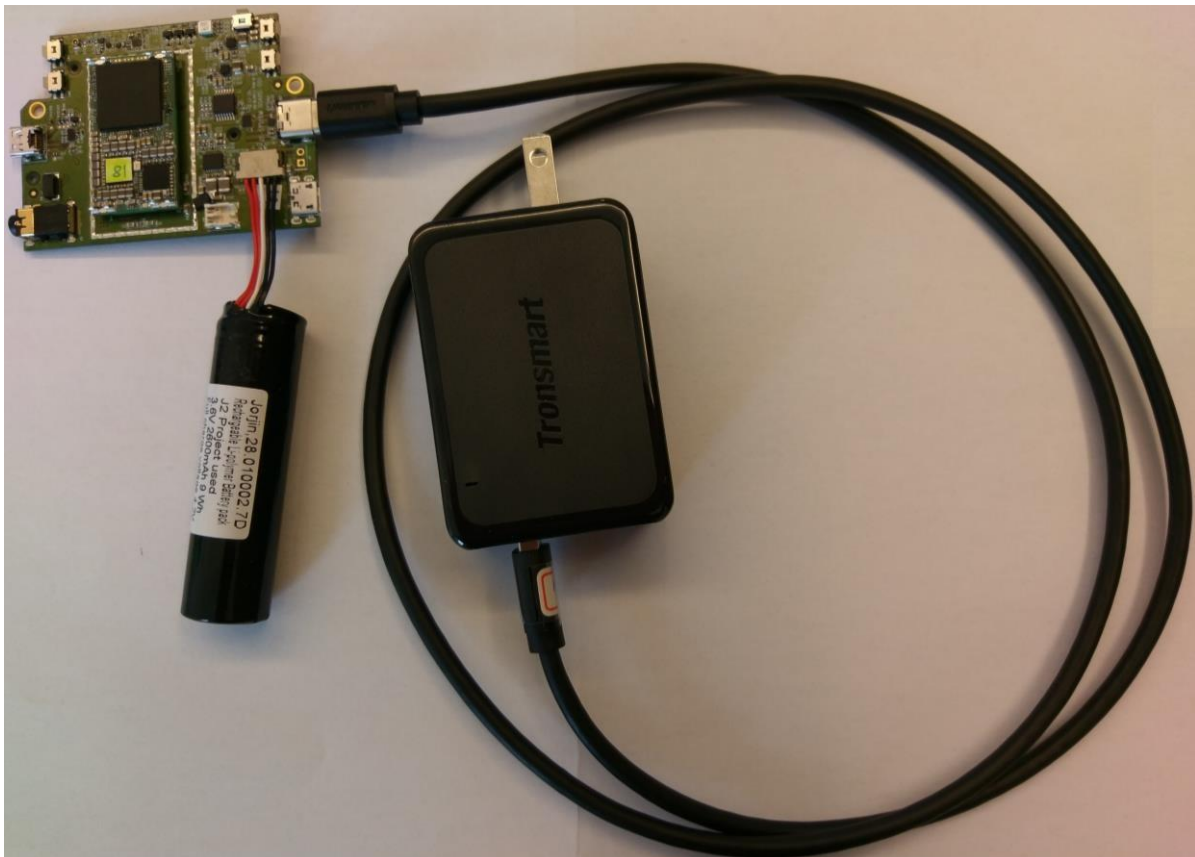
We don't recommend to disconnect the battery directly because it will increase the risk to damage the connector.



3. Charger

- (1) Prepare the QC 3.0 adapter and Type C cable.
- (2) **Make sure the battery is connected to carrier board.**
- (3) Plug in Type C cable to Type C connector.

Warning: Can't plug the charger without battery



- Make sure the power adapter has the logo of Qualcomm quick charge 3.0:



- Type C Cable

Connector 1: USB Type-C Male
Connector 2: USB 2.0 Type A Male

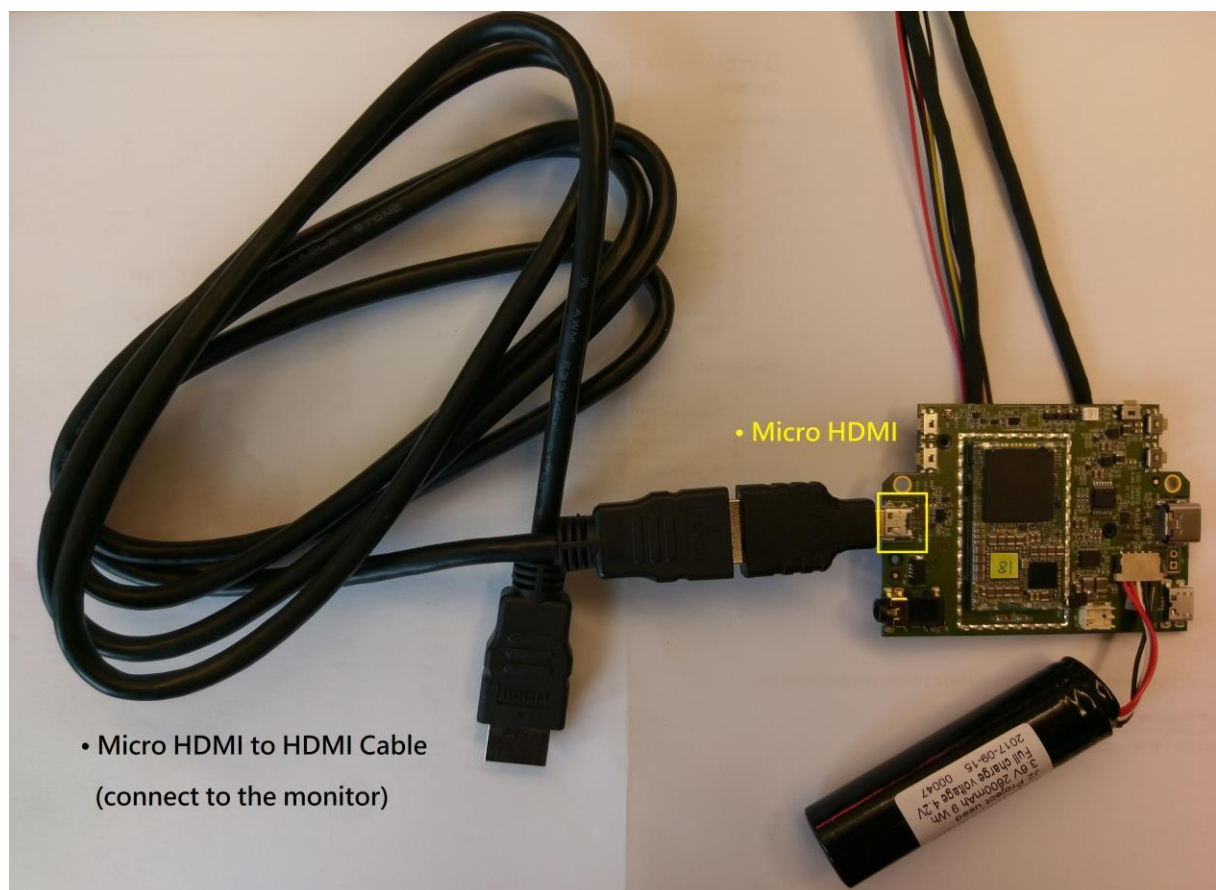


4. HDMI Connection

(1) Prepare a Micro HDMI to HDMI cable

- Connector 1: Micro HDMI
- Connector 2: HDMI

(2) Use the cable to connect the Micro HDMI receptacle connector on carrier board & monitor

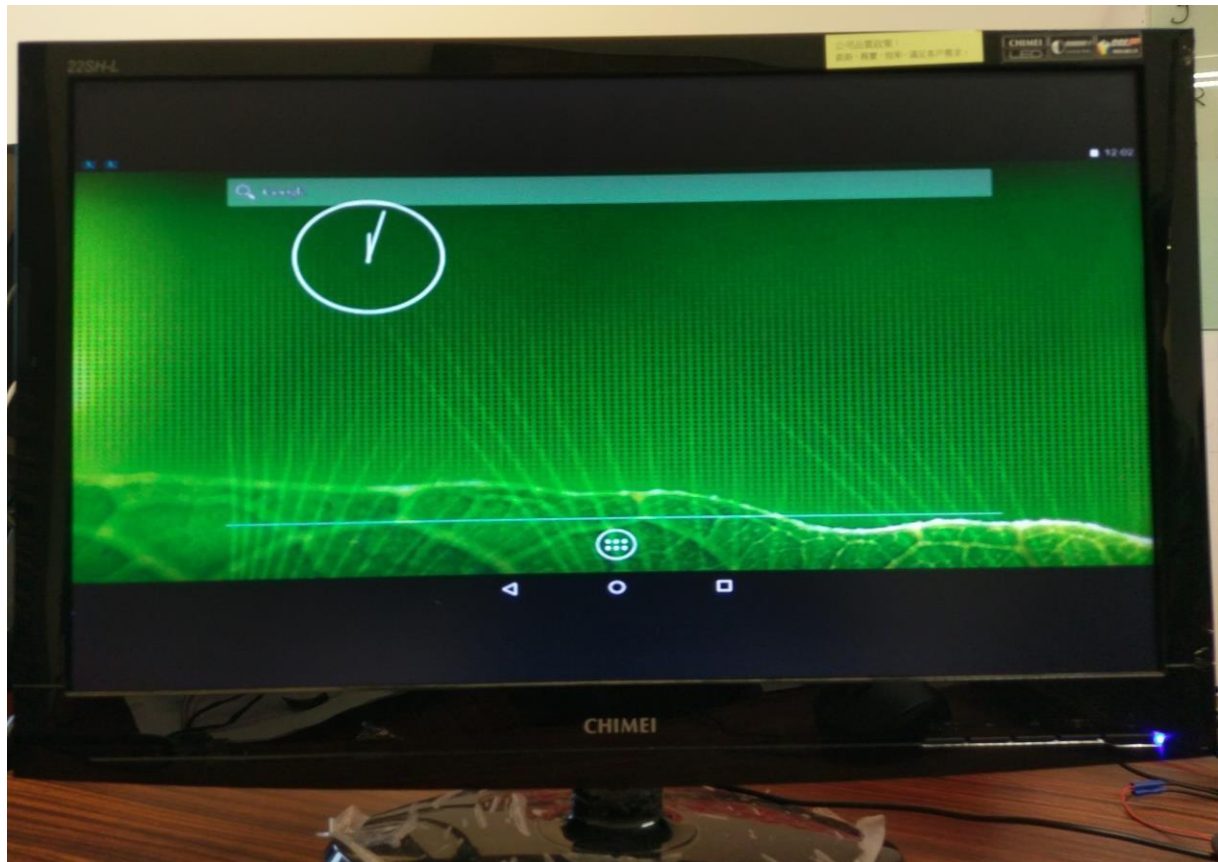




(3) If turning on the system successfully, you can see the boot up image as below.



(4) Finally the system will enter Android screen.



5. System Control

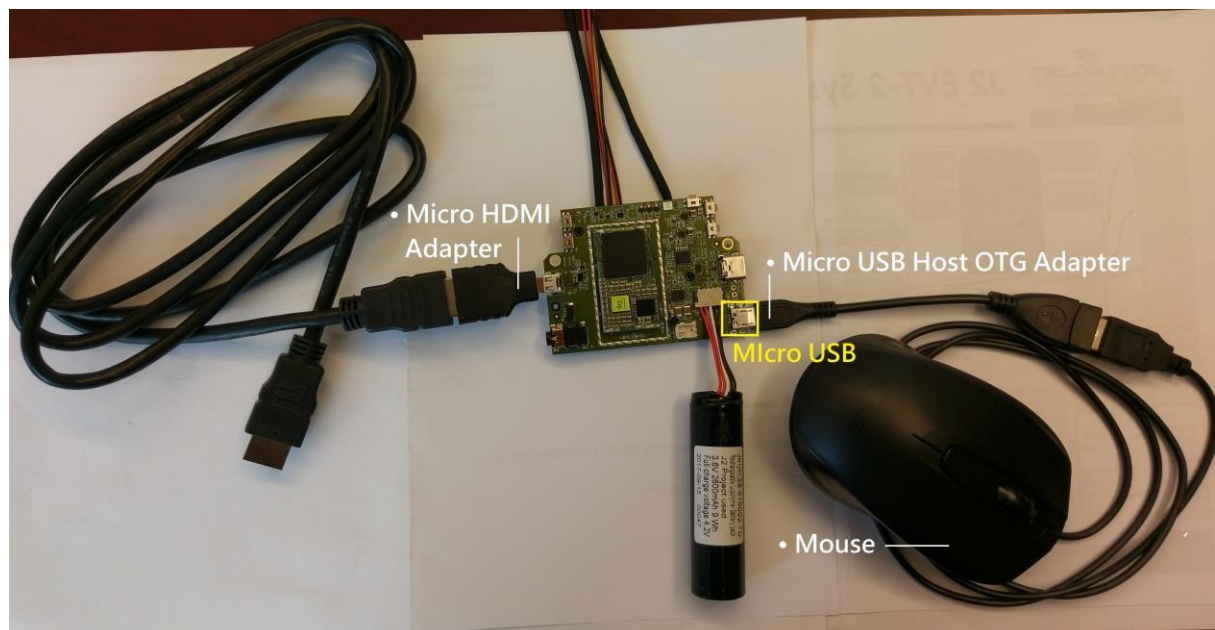
(1) Prepare a Micro USB OTG Adapter Cable

- Connector 1: Micro USB B 5-Pin Male
- Connector 2: USB 2.0 A Female

(2) Prepare a mouse and plug in OTG Adapter

(3) Connect to the micro USB connector on board

(4) Use the mouse to control the system



6. Turn on Camera

(1) Click menu icon 

(2) Tap camera icon  to open camera function

